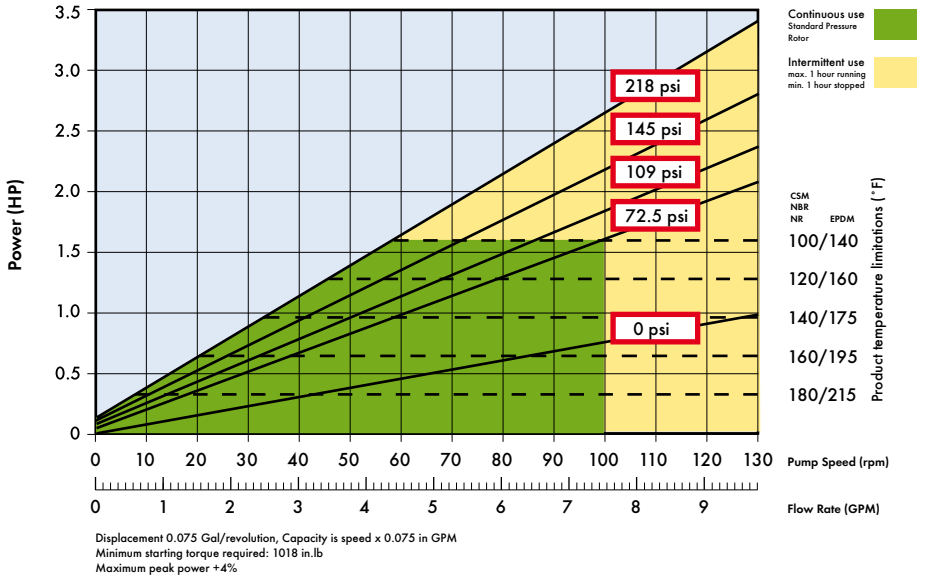


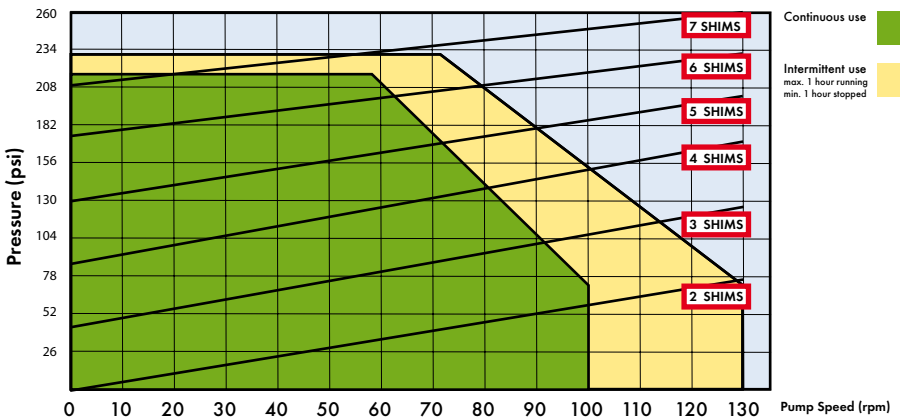
VERDERFLEX VF25

Technical Data Sheet

Performance Curve



Shimming Curve

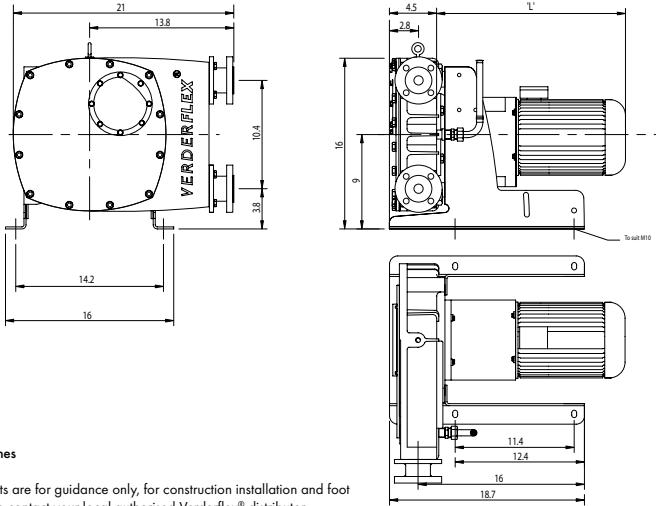


VERDERFLEX VF25

Technical Data Sheet

VERDERFLEX®

General Arrangement Layout



All dimensions are in inches

All dimensions and weights are for guidance only, for construction installation and foot mounting drawings please contact your local authorised Verderflex® distributor.

Standard Materials of Construction

Description	Material	Weight (lbs)	Paint Detail
Pump Housing	Cast Iron (GG25)	88	RAL 6018 (Green)
Front Cover	Mild Steel (BS.4360 Grade 43A)	13	RAL 7021 (Black)
Rotor	Cast Iron (GG25)	17.6	
Rotor Shoes	Aluminium (6082T6)	2	
Flanges	Mild Steel (BS EN.10.025 FE430A)	10	
Inserts	Stainless Steel (316L) Polypropylene P.V.D.F	0.9	
Base Frame	Carbon Steel	33	RAL 7035 (Grey)
Lubricant	Verderlube - Glycerine based compound Verdersil - Silicone oil	0.5 Gallons	
Hose	NR, NBR, CSM and EPDM	4.6	
Close coupled pump unit - "Flat Pack"		165	

VERDER Ltd

Whitehouse Street, Hunslet, LEEDS, LS10 1AD • Tel: +44 (0)113 222 0250
• Fax: +44 (0)113 222 0291 • info@verderflex.com • www.verderflex.com

Affiliated companies: AT Wien • BE Aartselaar • CN Shanghai • CZ Praha •
DE Haan • FR Eragny s/Oise • GB Leeds/Basildon • HU Budapest •
JP Tokyo • NL Groningen/Vleuten • PL Katowice • RO Bucuresti •
ZA Johannesburg • SK Bratislava • US Newtown

www.verderflex.com